

DOZER SPECIFICATIONS

D-950



Note: Optional equipment shown in photo.



LeTourneau, Inc.



POWER MODULE

DIESEL POWER OPTIONS

DETROIT DIESEL ENGINE

Model	16V 2000
Type	4-Cycle Turbocharged
Rated Power	1050 HP (783 kW @ 1900 RPM)
Cylinders	Sixteen (16)
Bore And Stroke	5.12 in. X 5.91 in. (130 mm X 150 mm)
Displacement	1944 cu. in. (31.86 liters)

CUMMINS DIESEL ENGINE

Standard Model	QST 30
Type	4-Cycle Turbocharged/Aftercooled
Rated Power	1050 HP (783 kW @ 1900 RPM)
Cylinders	Twelve (12)
Bore And Stroke	5.51 in. X 6.5 in. (140 mm X 190 mm)
Displacement	1861 cu. in. (30.5 liters)

RADIATOR/OIL COOLER MODULE

Type	Split Flow Side by Side Thermostatically Controlled Independent Hydraulic Motor-Driven Radiator Fan
Fan Speeds	2-Speed
Cooling Capacity	45 gals (170 liters)

AIR FILTRATION

LeTourneau, Self Cleaning, KLENZ™ System
99.9% Efficiency Filtered Down to 0.3 Microns
Supply Filtered Air For:

Engine Air
Drive System Cooling
Pressurized Cab

EXHAUST SYSTEM

Low Restriction Mufflers With Top, MID Hood Discharge



CONTROL SYSTEM-LINCS™

LeTourneau Integrated Network Control System - LINCS™

Switched Reluctance (SR) Propulsion System
Microprocessor Based Full Digital Control and Monitoring
• Hydraulics • Electrics • Engine • Traction Drive
Modular Design
Built-in Diagnostics • Dash Display and Keypad
Solid State AC-DC Phase Controlled Traction Drive
SR Drive Advantages Include: No Contactors, No Power Switch Gear,
and No Armatures or Brushes on Traction Motors



PROPULSION SYSTEM

Batteries	Four (4) 12-Volt
Model	4D
Starter	24 Volt
Alternator	120 Amp With Integral Voltage Regulator

A.C. GENERATOR

Model	LeTourneau 6-R A.C. Generator
Type	Alternating-Current, 3-Phase, 4-Pole
Excitation	Solid State

TRACTION MOTORS

Model	LeTourneau B40
Type	Switched-Reluctance
Number	Four (4) - All Wheel Drive

DRIVE GEARING

Model	LeTourneau 35A
-------	----------------

In-line gear train mounted within the rim of the tire, transmitting power from the traction motor to the tire/rim assembly.

Each drive unit consists of a planetary gear train, hub structure, spindle structure, and a bearing carrier assembly.

Total Reduction	95.6:1
-----------------	--------

DRIVE SYSTEM COOLING AIR

Function	KLENZ™-Filtered Air Cools Electrical Control Boxes, A.C. Generator And Traction Motors
Blower	Centrifugal Fan With Backward-Curved Blades
Drive	2-Speed Hydraulically Driven



TIRES

STANDARD

Front And Rear Tires	45/65-45 Bias Ply 46 PR L-5 Tread
Rims	36-45

OPTIONAL

Front And Rear Tires	45/65-R45 Radial Tire
----------------------	-----------------------



TRAVELING SPEED

INFINITELY VARIABLE

Forward And Reverse	0-15 mph (0-24.1 Kph)
---------------------	-----------------------



OPERATING CAPACITIES, WEIGHTS AND DIMENSIONS

STANDARD

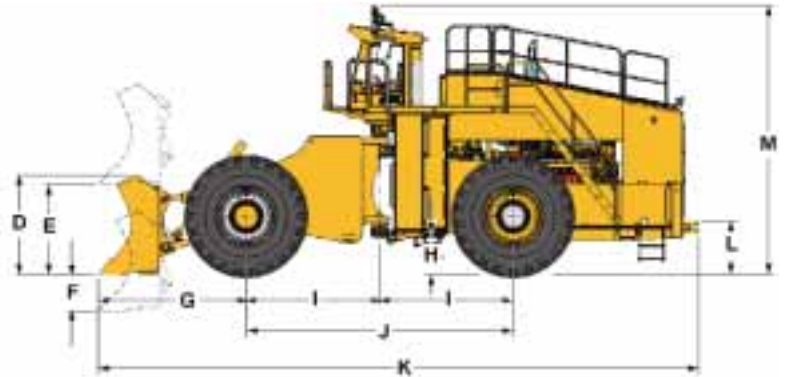
Blade Capacity	35 yd ³	(26.7 m ³)
Blade Width	20 ft. 7 in.	(6.27 m)
Blade Tilt	3 ft 10 in.	(1.17 m)
Blade Pitch	11 in.	(0.28 m)
Digging Depth	1 ft 6 in.	(0.45 m)
Ground Clearance	1 ft 6 in.	(0.45 m)
Overall Length Blade Down	43 ft 10 in.	(13.36 m)
Wheelbase	19 ft 6 in.	(5.94 m)
Tread Width	12 ft 3 in.	(3.73 m)
Width Outside Tires	16 ft 5 in.	(5.00 m)
Height Over Cab	19 ft 6 in.	(6.00 m)
Rimpull	163,000 lbs.	(725 kilonewtons)
Operating Weight	220,000 lbs.	(99,800 kgs)



STANDARD CONFIGURATION



LA 6418



Top View

(A)	12 ft 3 in.	(3.73 m)
(B)	16 ft 0 in.	(4.87 m)
(C)	20 ft 7 in.	(6.27 m)

Side View

STANDARD

	Blade 35 yd ³	(27.00 m ³)
(D)	7 ft 4 in.	(2.22 m)
(E)	5 ft.	(1.52 m)
(F)	1 ft 4 in.	(0.40 m)
(G)	11 ft 1 in.	(3.38 m)
(H)	1 ft 6 in.	(0.45 m)
(I)	9 ft 9 in.	(2.97 m)
(J)	19 ft 6 in.	(5.9 m)
(K)	44 ft 1 in.	(13.44 m)
(L)	3 ft 3 in.	(1 m)
(M)	19 ft 9 in.	(6.00 m)



ELECTRICAL AND MECHANICAL BRAKING

PRIMARY BRAKING SYSTEM

Electric Braking (Retarding) is designed as the primary braking system which can be controlled from the accelerator or retard/brake pedal. This solid-state, non-wearing parts braking system will bring the dozer to a full stop without application of the air-operated disc brakes used for backup.

EMERGENCY AND PARKING BRAKE SYSTEM

Motor speed disc brakes, spring-actuated air release, automatic actuation on all four wheels in the event of pressure loss.



FRAME

The unique LeTourneau box structure frames are fabricated from high-strength, low-alloy steel with excellent weldability and low temperature properties throughout. The front axle is an integral, fixed part of the frame. The rear axle is allowed to oscillate a total of +/- 11 degrees on the rear frame.

The independent power module mounting system is cradled within the rear frame by a three-point isolation system.



INDEPENDENT STEERING AND HOIST SYSTEMS

ARTICULATED POWER STEERING

Articulating frame - full-time joystick controlled power steering. The electric drive, with its constant-rated engine RPM, provides full steering response regardless of vehicle speed.

Operating Pressure	2500 PSI	(17,238 kPa)
Articulation Angle	42° Each Side	
Turning Radius	32 ft 5 in.	(9.88 m)



HYDRAULIC SYSTEM

PUMP DRIVE BOX

LeTourneau, Inc. Gearbox
Wet Spline Design With Pressurized And Filtered Lubrication

Ratio 1:1

PUMPS

Main Pumps	(2) Piston Pump	250 GPM	(946 l/min)
Steering	Vane Pump	90 GPM	(340 l/min)
Fan/Blower Drive	Tandom Piston Pump	45/45 GPM	(170/170 l/min)
Cooling System Circulating	Vane	110 GPM	(416 l/min)
Gearbox Lube		17 GPM	(64 l/min)

VALVES

Main	Relief Pressure	3000 PSI (26,200 kPa)
Steering	Relief Pressure	2500 PSI (17,238 kPa)

CYLINDERS

Double-Acting, Single-Stage

Hoist	Diameter And Stroke	6 in. X 46 in. (152 mm X 1143 mm)
Tilt & Pitch	Diameter And Stroke	Tilt - 6 in. X 14 in. (152 mm X 355 mm) Pitch - 6 in. X 11 in. (152 mm X 279 mm)
Steering	Diameter And Stroke	7.5 in. X 30 in. (190 mm X 762 mm)

FILTERS

Full System, Gearbox	Return-Flow	10 Micron Absolute
Piston Pump (Case Drain)		10 Micron Absolute



GENERAL SERVICE DATA

FLUID CAPACITIES

Fuel Tank	565 gals	(2,138 l)
Hydraulic Tank	260 gals	(984 l)
Cooling System	50 gals	(190 l)
Crankcase (Includes Filters)		
Cummins	35 gals	(132 l)
Detroit Diesel	25 gals	(94 l)
Gearbox	5 gals	(19 l)
Drivers (Each)	6.1 gals	(23 l)



OPERATOR ENVIRONMENT

CAB

Spacious, ergonomically designed operator's cab is mounted directly over the center articulation point, assuring driver comfort and excellent visibility. The cab is independently elastomer-mounted and separate from the ROPS structure, minimizing vibration and sound transmission. Only KLENZ™ filtered air enters the pressurized cab, which includes a combination high capacity air conditioning/heater-defroster. The operator's seat is 9-way adjustable with air suspension and retractable seat belt. Other standard features include joystick steering, joystick blade control, tinted thermopane glass, sun visors and full insulation for thermal and acoustical dampening.



STANDARD FEATURES

Engine Coolant Temperature Gauge
 Engine Lube-Oil Pressure Gauge
 Fuel Level Gauge
 Hour Meter
 Speedometer
 System Air Pressure Gauge

STANDARD INDICATOR LIGHTS AND AUDIBLE ALARMS

The operator is informed of a potential problem by audible alarm and text messages on an in-dash display. The digital display provides repair technicians with operational data and fault messages in the event of mechanical, electrical or electronic malfunction.

Three warning lights immediately advise the operator of the severity/condition of various engine, hydraulic, electrical and electronic systems of the dozer. (RED, AMBER and BLUE).

STANDARD EQUIPMENT

Access Ladder Light
 Air Clean-Out Hose In Cab
 Air Conditioning / Heater-defroster Filtered And Pressurized
 Air Dryer System
 Air Horn
 Air Tank Bleed System
 Automatic Blade Leveling Control
 Automatic Electrical Cabinet Lights
 Automatic Lubrication System
 Back-up Alarm, Audible
 Battery Disconnect Switch
 Blade Liner for Rock Blade
 Brake Lights
 Cigar / Cigarette Lighter
 Cruise Control
 Electrical Cabinet Interlock Kit
 Emergency Stop Buttons - Cab and Remote Mounted
 Engine Compartment Light
 Fire Extinguisher, Manual, 21 lbs (9.53 kgs)
 FOPS, Falling Object Protection System
 Ground Fault Electrics
 High, Low Idle Control Switch
 Idle Timer
 Illuminated Instrument Panel
 Interior Lights
 Joystick Hoist and Blade Controls
 Joystick Steering
 LINCST™ - LeTourneau Integrated Network Control System
 & Full Vehicle Monitoring
 Maintenance Lock-Out Switch
 Mirrors, Rearview (Parabolic)
 Operator Seat - 9-Way Adjustable With Retractable Seat Belt
 Overspeed Alarm
 Parking Brake
 Rear Vehicle Access
 ROPS, Rollover Protective Structure
 Sun Visor
 Tinted Safety Glass Throughout (Thermopane)
 Tow Hitch, Rear
 Turn Signals
 Twelve (12) Volt Power Supply
 Windshield Washer Reservoir (5 gallons)
 Windshield Wiper and Washer, Front & Rear
 Work Lights, 110 Volt - 500 Watt (4) Front (2) Rear



OPTIONAL FEATURES

Auxiliary Oil Cooler
 Auxiliary Steering System
 Central Service with Fast Fuel
 Engine Heating System, Oil and Water
 Fast Fuel
 Fire Detection System
 Fluid Sampling Kit
 Grease Reservoir Heater
 Hydraulic Tank and Battery Heater
 Jump Start Kit
 L&M Mesabi Radiator
 Manual Fire Suppression System
 Remote Monitoring System



BLADE OPTIONS

COAL BLADE 60 Cubic Yards (46 cubic meters)
 23 ft. 8 in. width, (7.21 meters)
 8 ft. 4 in. height, (2.54 meters)



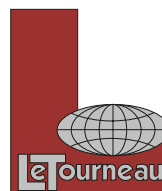
SAFETY CERTIFICATION

Meets the following MSHA, SAE and ISO Safety Standards:

Brake Performance Test SAE J1473 / ISO 3450
 Exterior Sound Level SAE J88
 FOPS SAE J231 / ISO 3449
 Interior Sound Level SAE J919
 Nomenclature and Specification-Dozers SAE J729
 ROPS SAE J1040 / ISO 3471
 Steering Test SAE J1511 / ISO 5010

Please Note: Standard/Optional Equipment, Features and Performance conform to U.S. and International Codes as Required.

LeTourneau, Inc. has made every effort to make these specifications as accurate as possible at the time of printing. However, we reserve the right to make changes and improvements at any time without notice, in equipment, materials and specifications. To ensure the most current information, please contact your LeTourneau, Inc. dealer representative.



LeTourneau, Inc.

P.O. Box 2307 • Longview, TX 75606 • (903) 236-6598 • FAX (903) 236-6585
www.letourneau-inc.com • email: equipment.sales@letourneau-inc.com